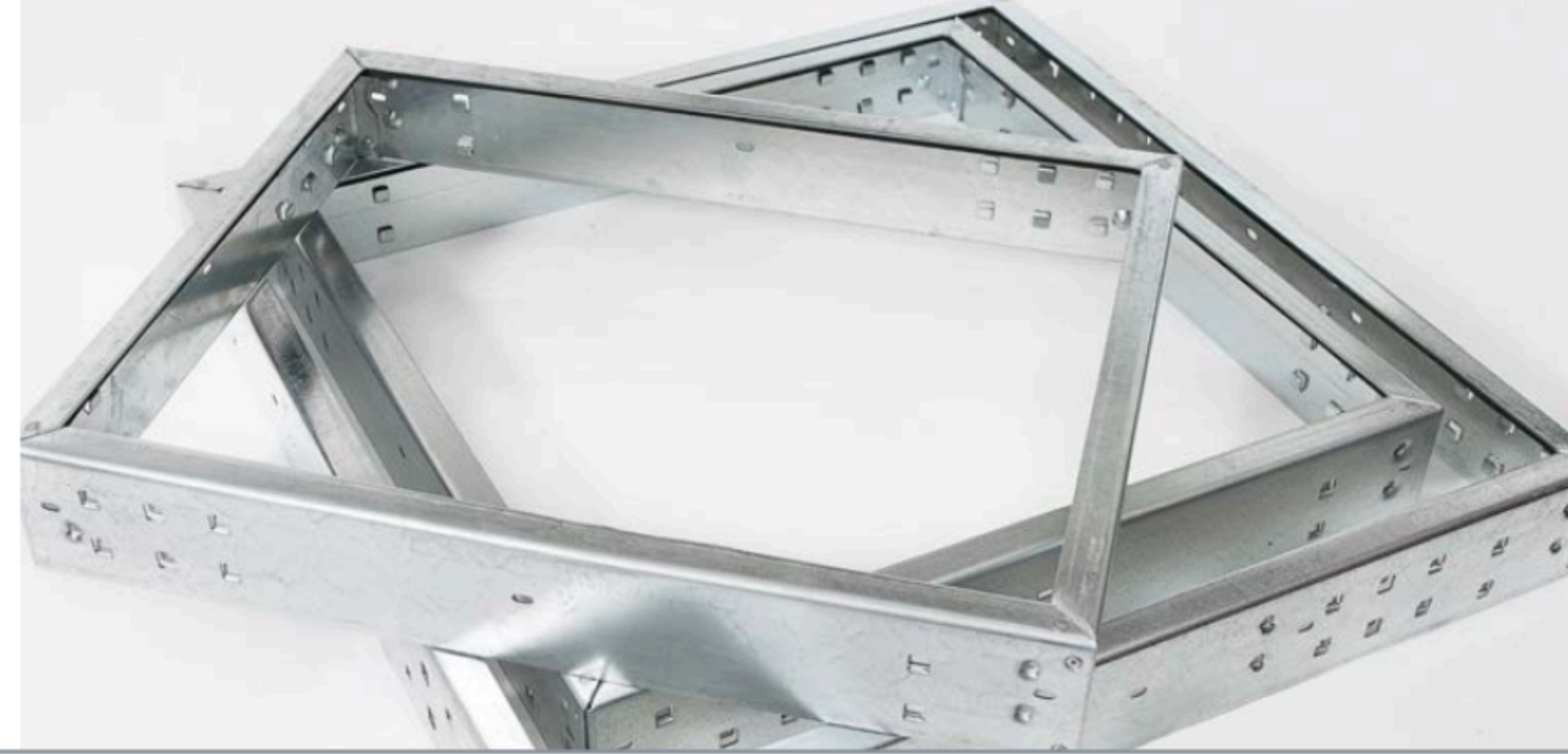


UNIVERSAL FRAME

Perfect for modernizing
your ventilation

Groupe P.N.F. Inc. manufactures
a full range of universal frames in
steel, stainless steel or aluminum.



PRIMARY USES	CHARACTERISTICS	ADVANTAGES
<ul style="list-style-type: none">- Commercial facilities- Industrial facilities- Medical facilities	<ul style="list-style-type: none">- 7 standard sizes: 24x24, 20x25, 20x20, 16x25, 16x20, 20x24 and 12x24- Designed to fit filters between 1" and 36"- Can be sold in 2x3 filtration wall all welded- Frame can come with or without gasket on the edge to minimize air bypass- Different clips are available- The gasket tolerates a temperature up to 140°F.- Available in non-standard sizes- Available in 16 GA galvanized steel and 18 GA stainless steel	<ul style="list-style-type: none">- Economical- Excellent durability- Quick and easy replacement of the filter element
		Data sheet available on request.

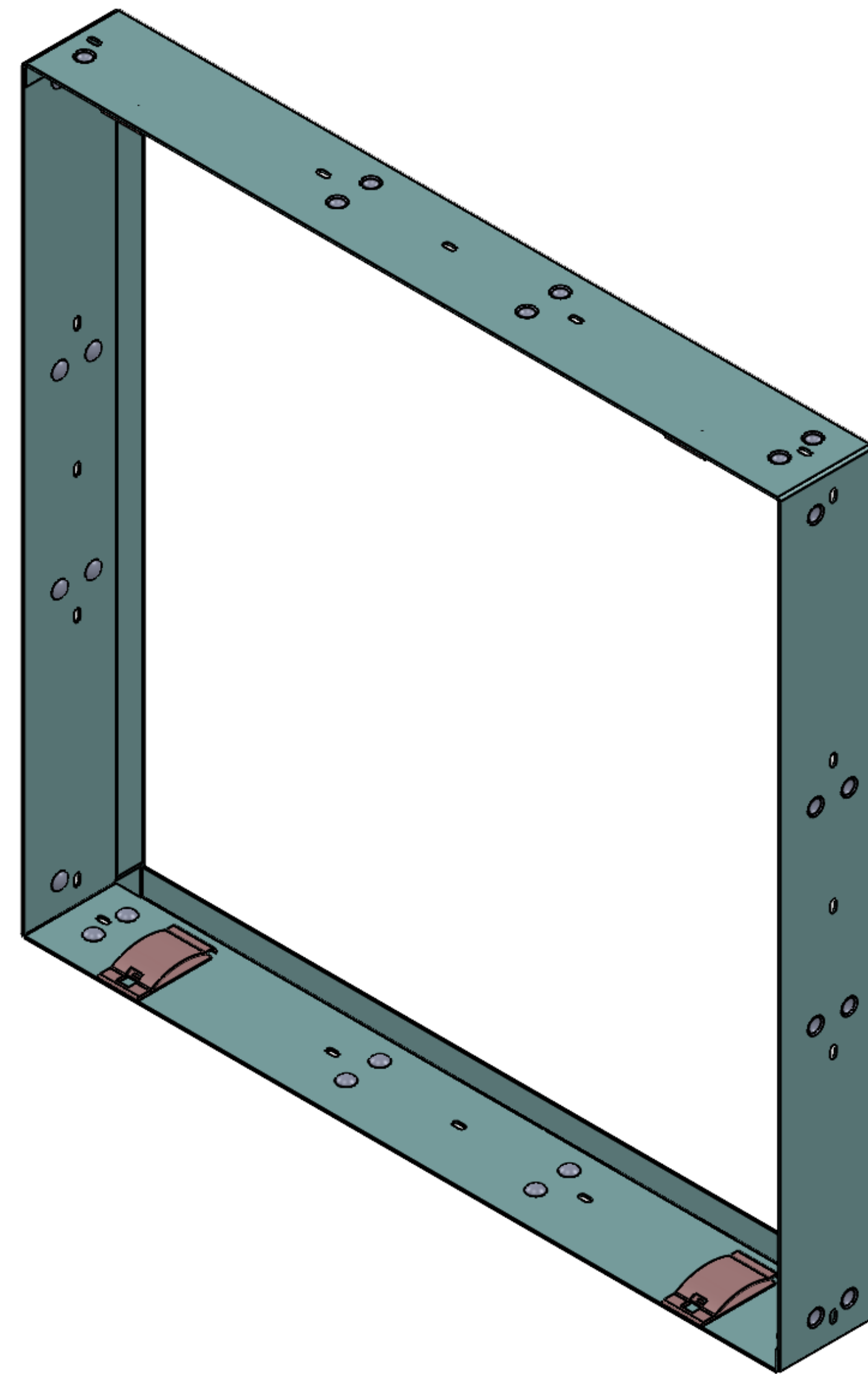
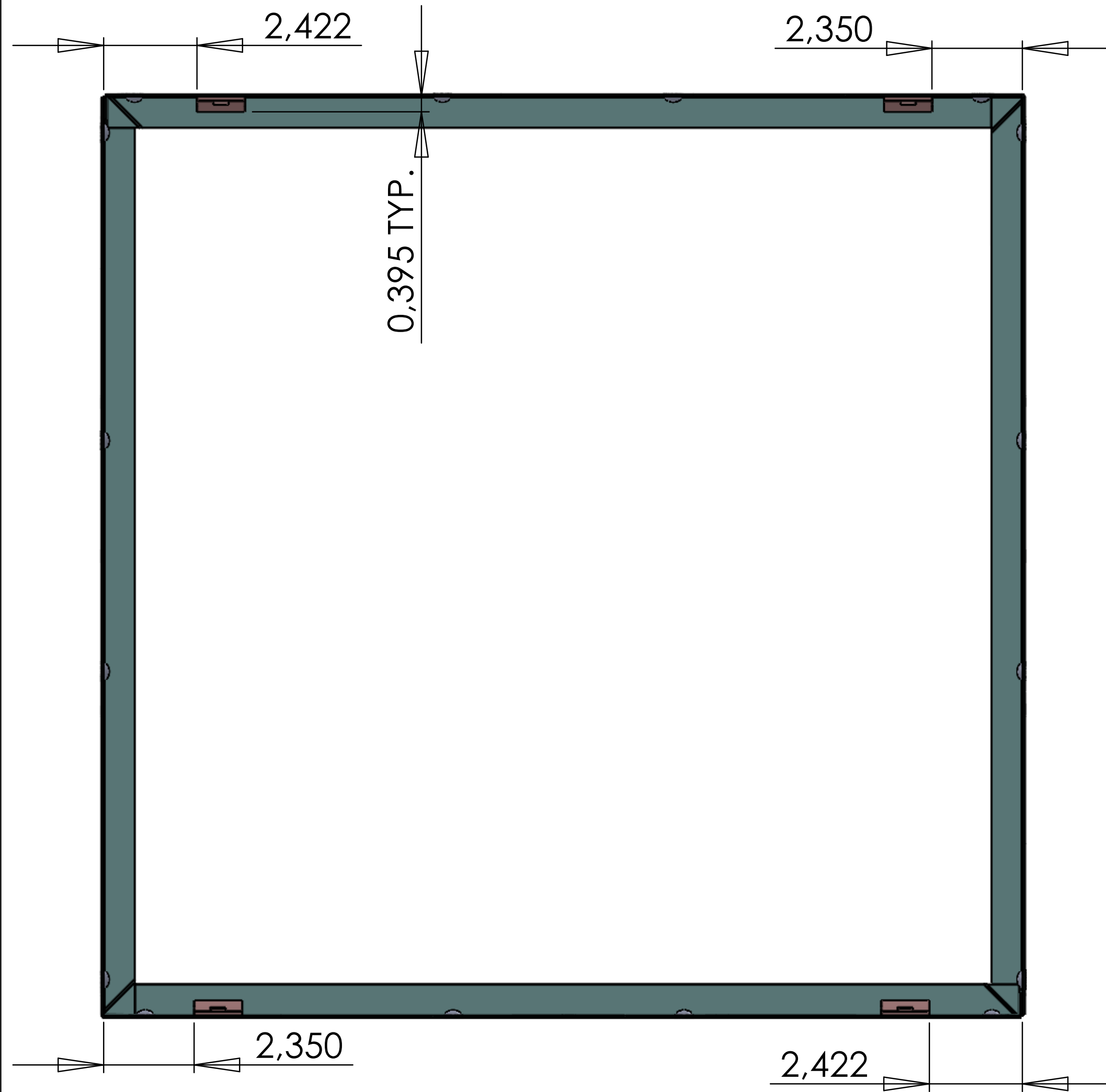


DISTRIBUTED BY . . .



Phone: 503.968.3261 • www.AirFiltersNW.com





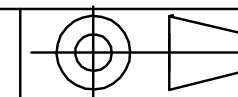
DISTRIBUTED BY . .



Phone: 503.968.3261 • www.AirFiltersNW.com

ng frame with clip

Date: 09 Oct 2023



dessinateur:

drafter:

approuvé par:

matériel:

TOLERANCES

SAUF INDICATIONS CON
UNLESS OTHERWISE SPE



FASeal™ Frame Installation Instructions



Fig 1: 24"x24" FASeal™ Frame

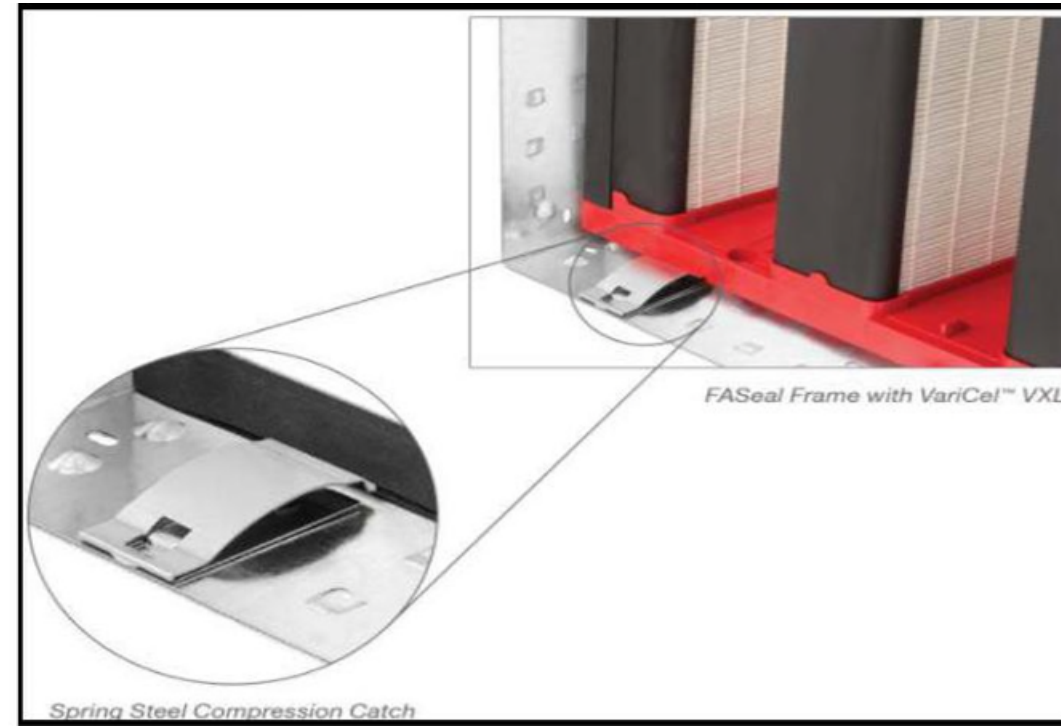


Fig 2: Typical Filter Installation (Single Header Shown)

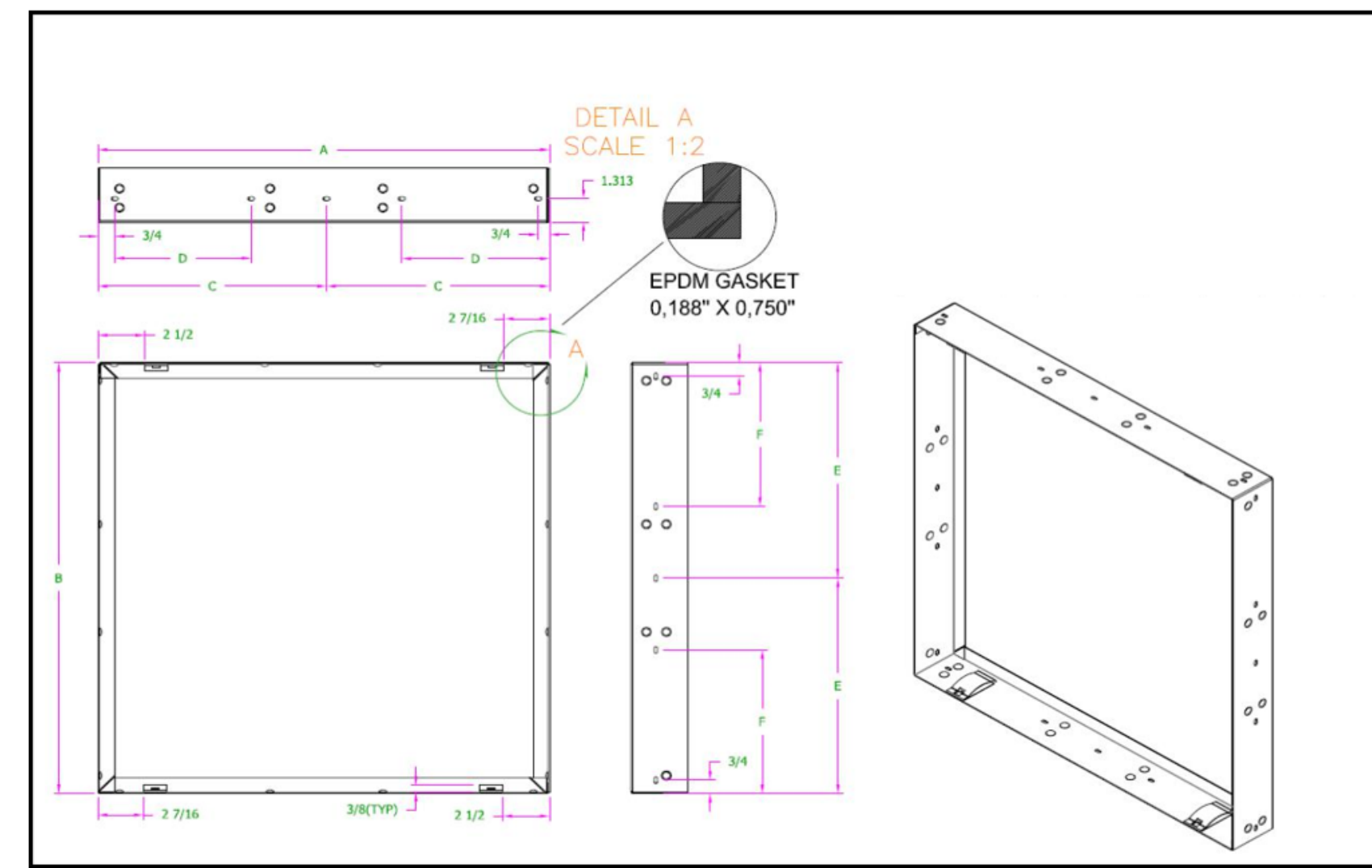


Fig 3: FASeal™ Frame Part Numbers and Dimensions

Assembly Notes:

- > Stiffeners, block-offs, caulking, and mounting hardware to be supplied by others.
- > Installer is responsible for the sealing integrity of the filter frame bank.
- > For proper sealing and integrity:
 - > Install fasteners through all mounting holes provided, five per side.
 - > Caulking is required between all frame joints to prevent bypass; between all frame-to-frame connections as well as between frames and all block-offs, housings, etc.
- > Stiffener strips should be utilized between every other column on filter frame banks 4 high x 4 wide and larger.

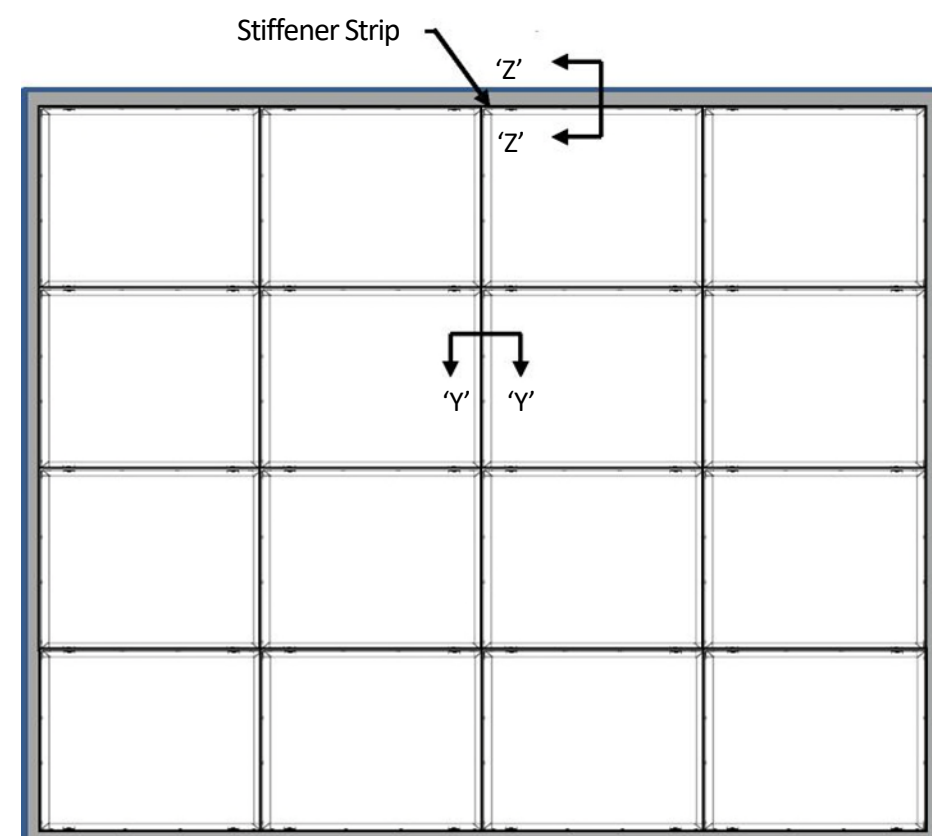
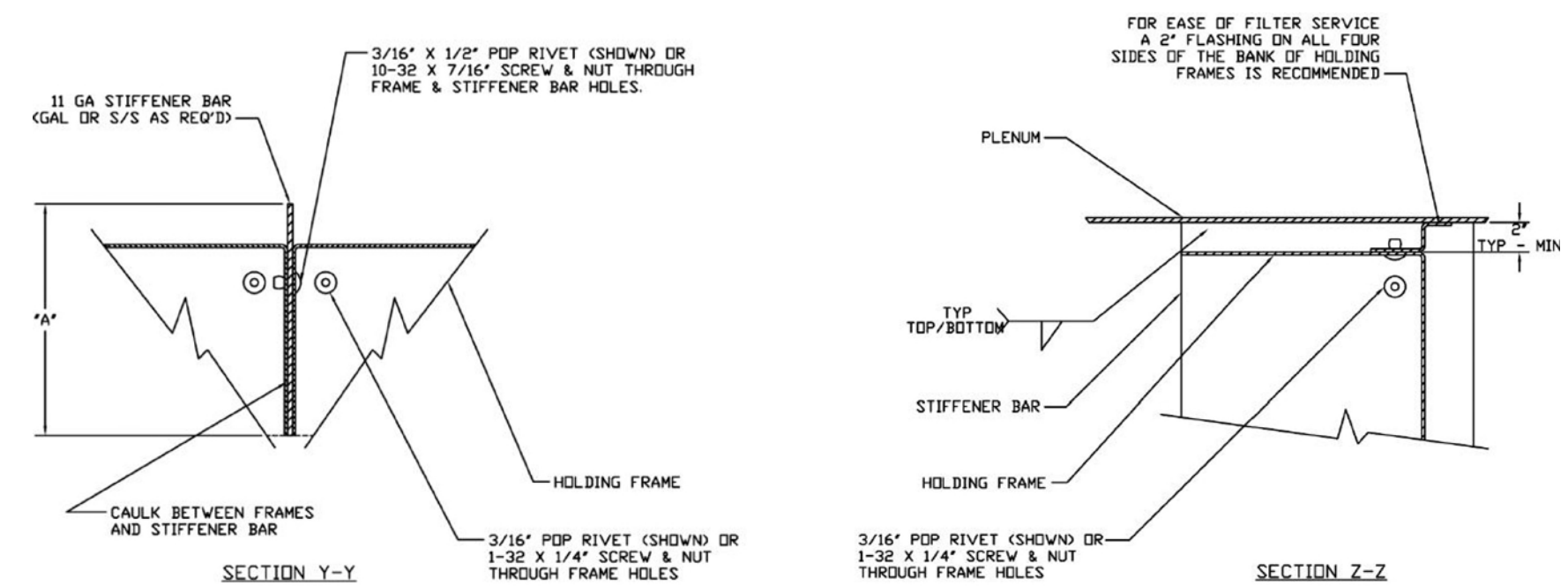


Fig 4: 4 high x 4 wide Filter Frame Bank



No. of FRAMES HIGH	'A' BAR WIDTH
4 FRAMES	3-1/2"
5 FRAMES	4"
6 FRAMES	4-1/2"
7 FRAMES	5"
8 FRAMES	5-1/2"

NOTE: STIFFENER BARS, SCREWS, NUTS, AND OR RIVETS NOT SUPPLIED BY AAF FLANDERS.

DISTRIBUTED BY . .



Phone: 503.968.3261 • www.AirFiltersNW.com

